



Hurricane Fiona Adv. 17

For Planning Purposes Only!

WASHINGTON, DC
12:10:08
18 Sep 2022

CHICAGO
11:10:08
18 Sep 2022

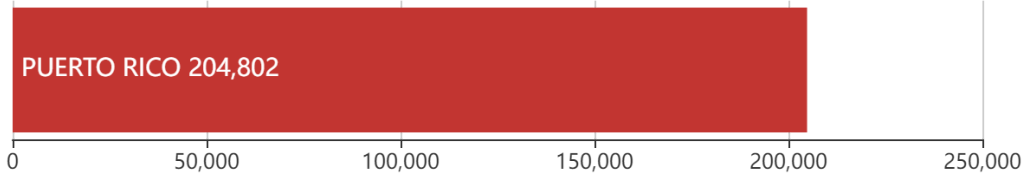
LOS ANGELES
09:10:08
18 Sep 2022

<https://simsuite.usace.army.mil/wab/v2.15/MissionModels/index.html#advid=257&oid=82&name=Hurricane%20Fiona&advisory=Adv.%2017&advlf=G>

Updated as of 18 Sep 2022 (11:10 AM Central Daylight Time)

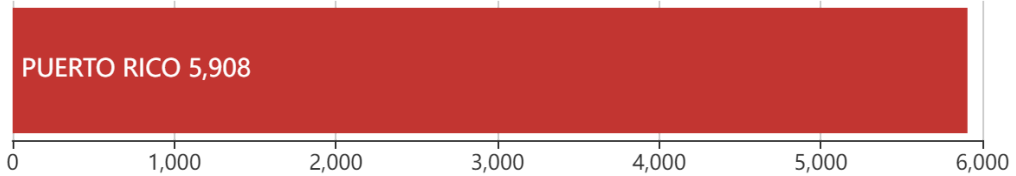
Debris

204.8K
cu. yd.



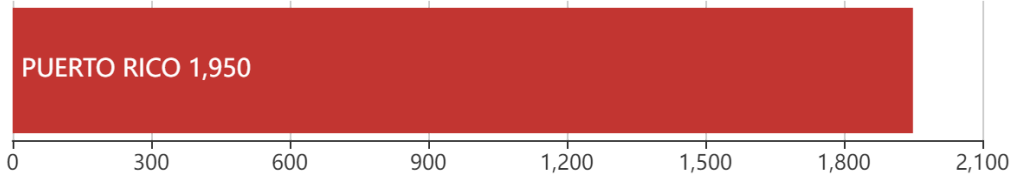
Est. Temp. Roofing

5.9K
units



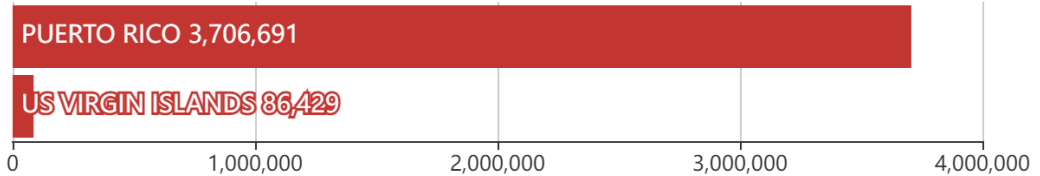
Act. Temp. Roofing

1.9K
units



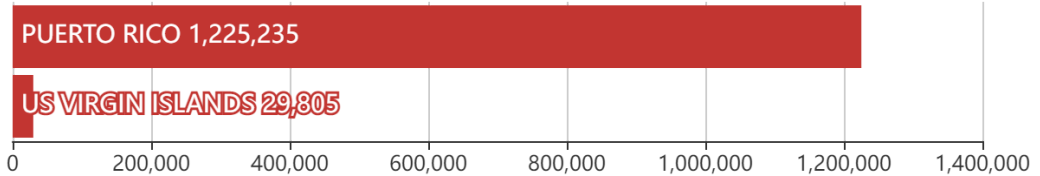
Population

3.8M
people



Households

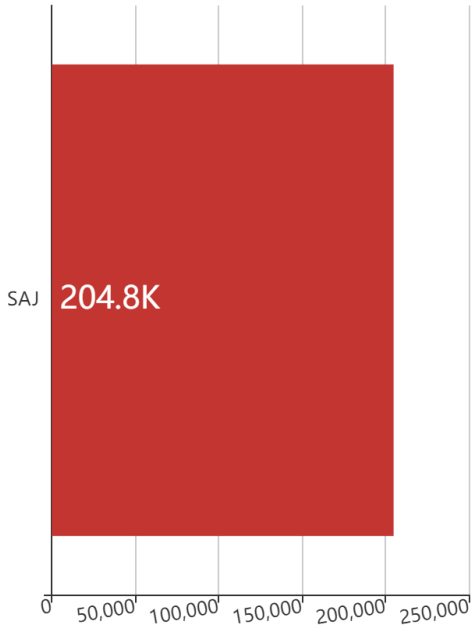
1.3M
households



Mission Model Summary

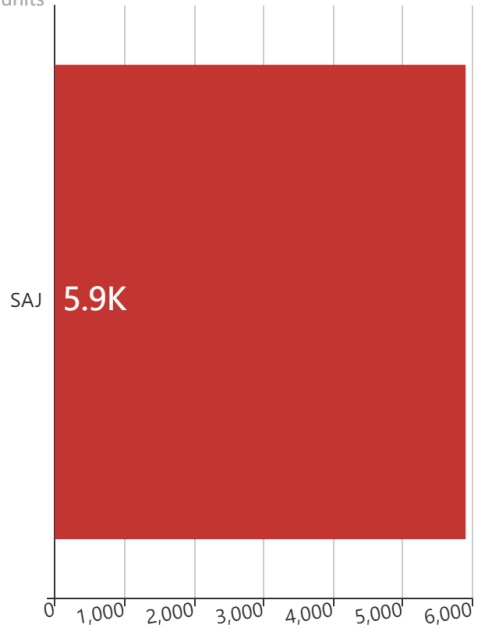
Debris By USACE District

cu. yd.

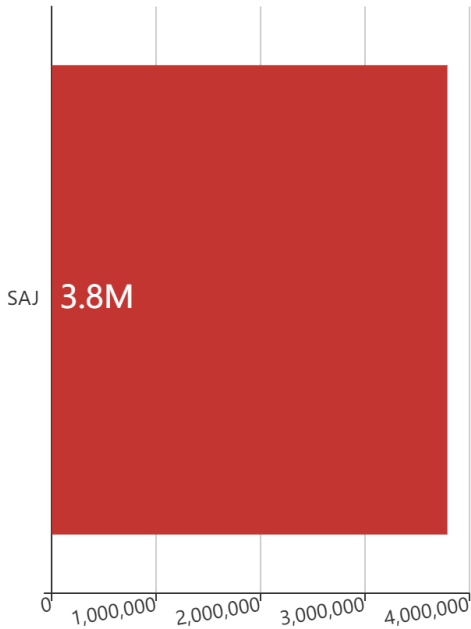


Est. Temp. Roofing By USACE District

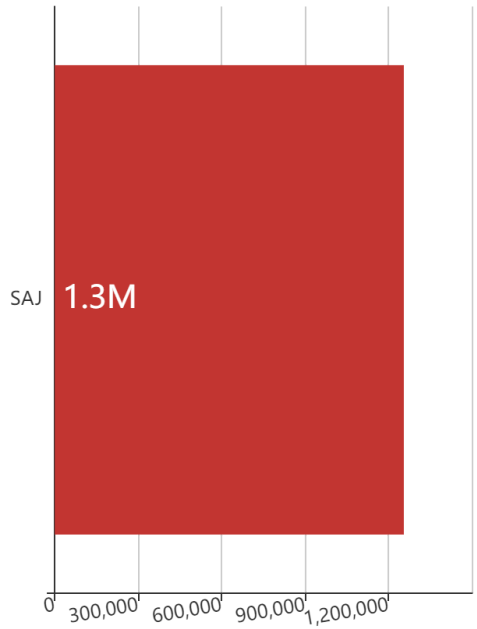
units



Population By USACE District



Households By USACE District





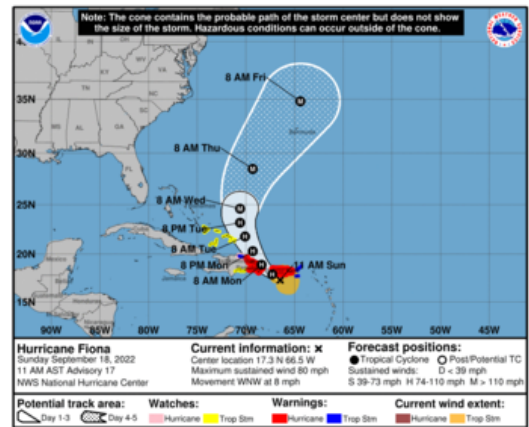
Key Messages for Hurricane Fiona

Advisory 17: 11:00 AM AST Sun Sep 18, 2022

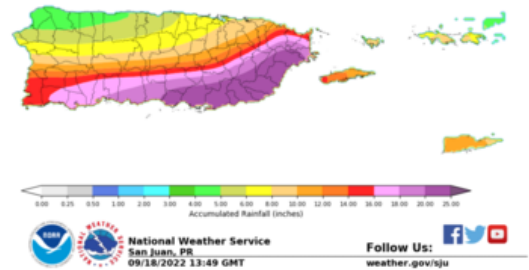
1. Hurricane conditions are expected across portions of Puerto Rico today and in portions of the Dominican Republic tonight and Monday. Tropical storm conditions are occurring across the U.S. and British Virgin Islands and will reach the Dominican Republic later today and tonight.

2. Heavy rains from Fiona will continue across Puerto Rico through tonight and occur over the Dominican Republic later today into Monday. These rainfall amounts will produce life-threatening flash floods and urban flooding across Puerto Rico and portions of the eastern Dominican Republic, along with mudslides and landslides in areas of higher terrain.

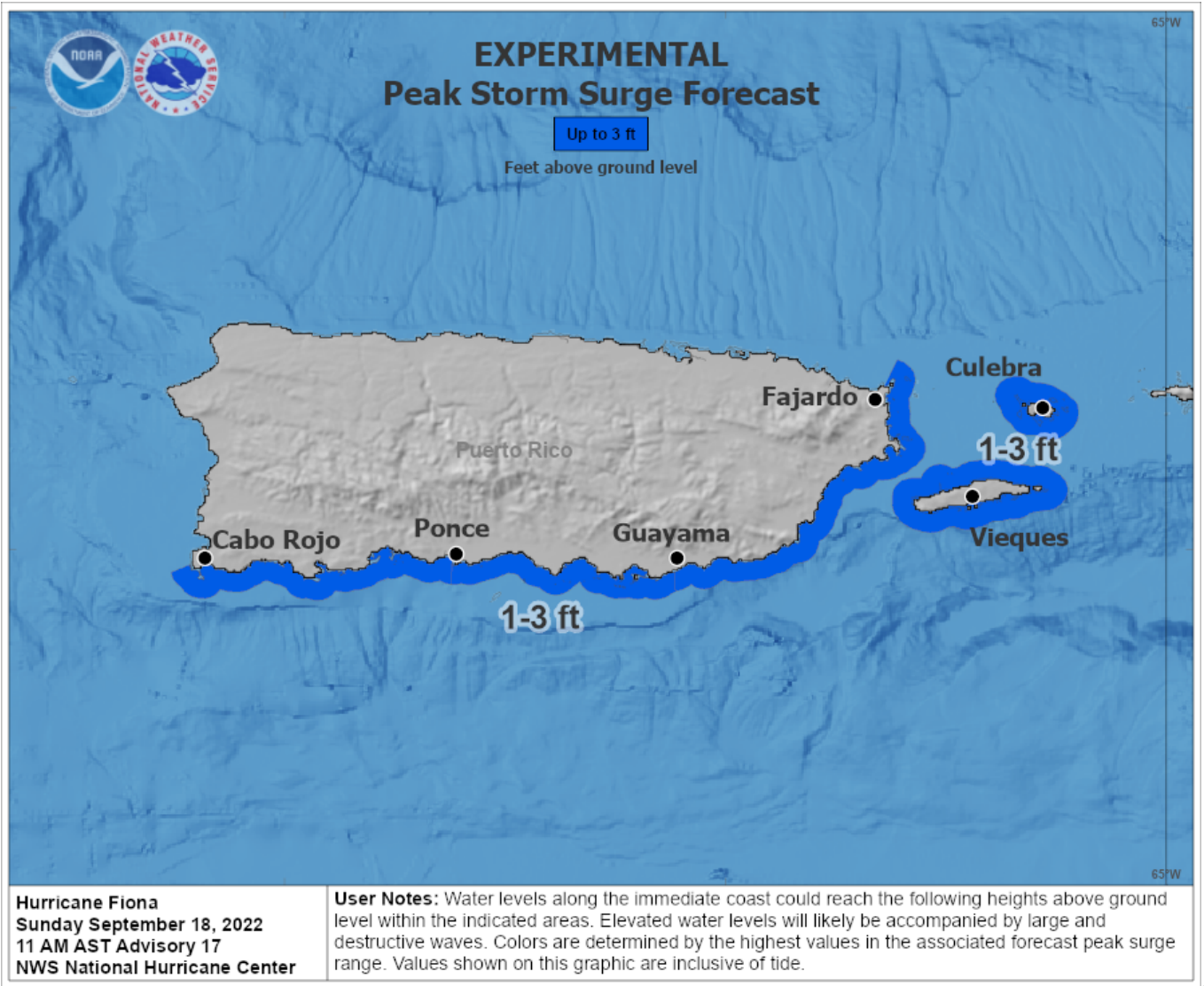
3. Fiona is forecast to continue to strengthen after moving away from Puerto Rico and the Dominican Republic. Tropical storm conditions are possible in the Turks and Caicos Islands and the southeastern Bahamas by late Monday or early Tuesday.



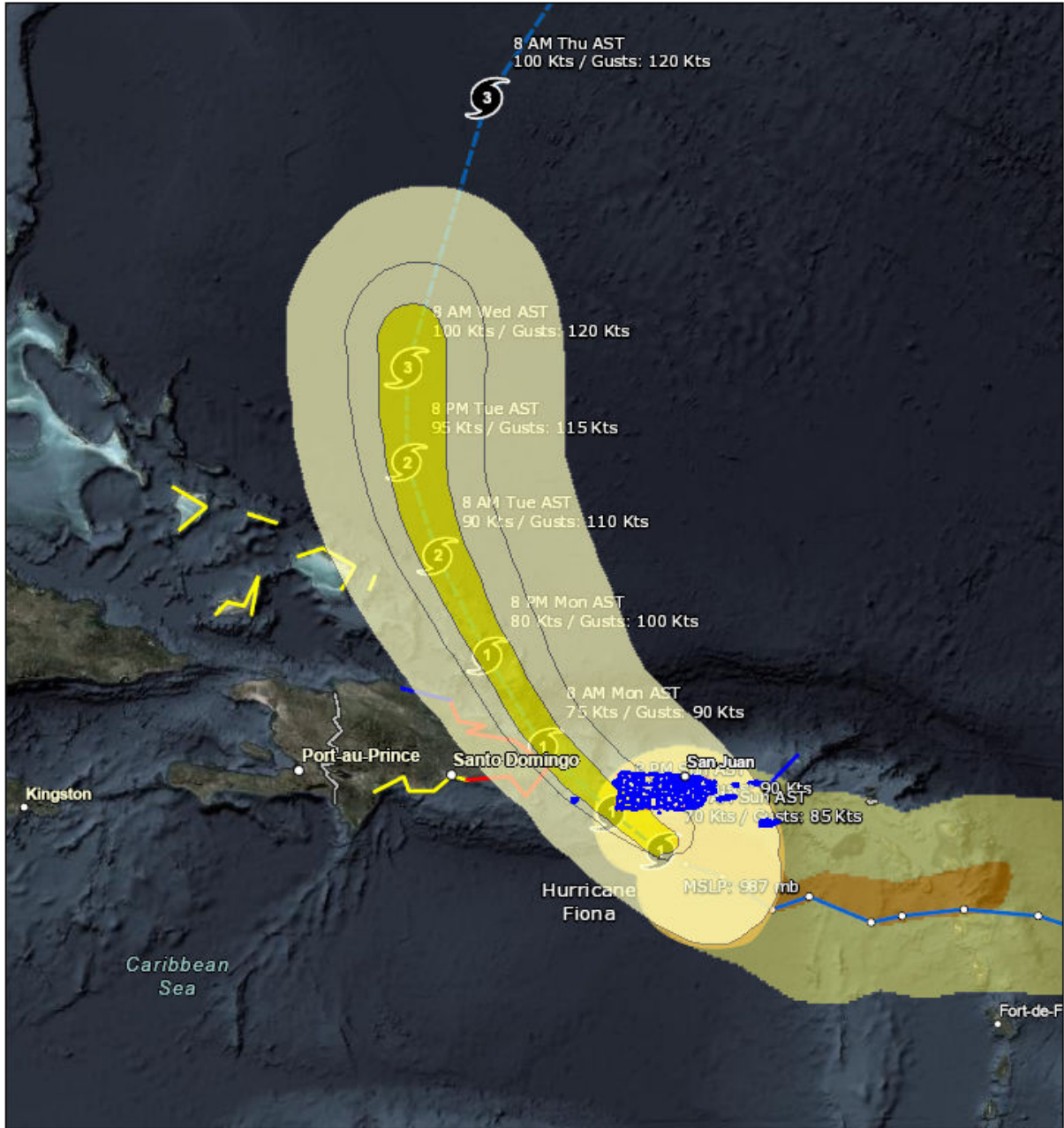
72-hrs Rain Forecast for Puerto Rico and the U.S. Virgin Islands
Data Source: NWS Forecast
Valid from 09/18/2022 10Z to 09/21/2022 10Z



For more information go to hurricanes.gov



Letter ANSI A Portrait



1:9,982,957

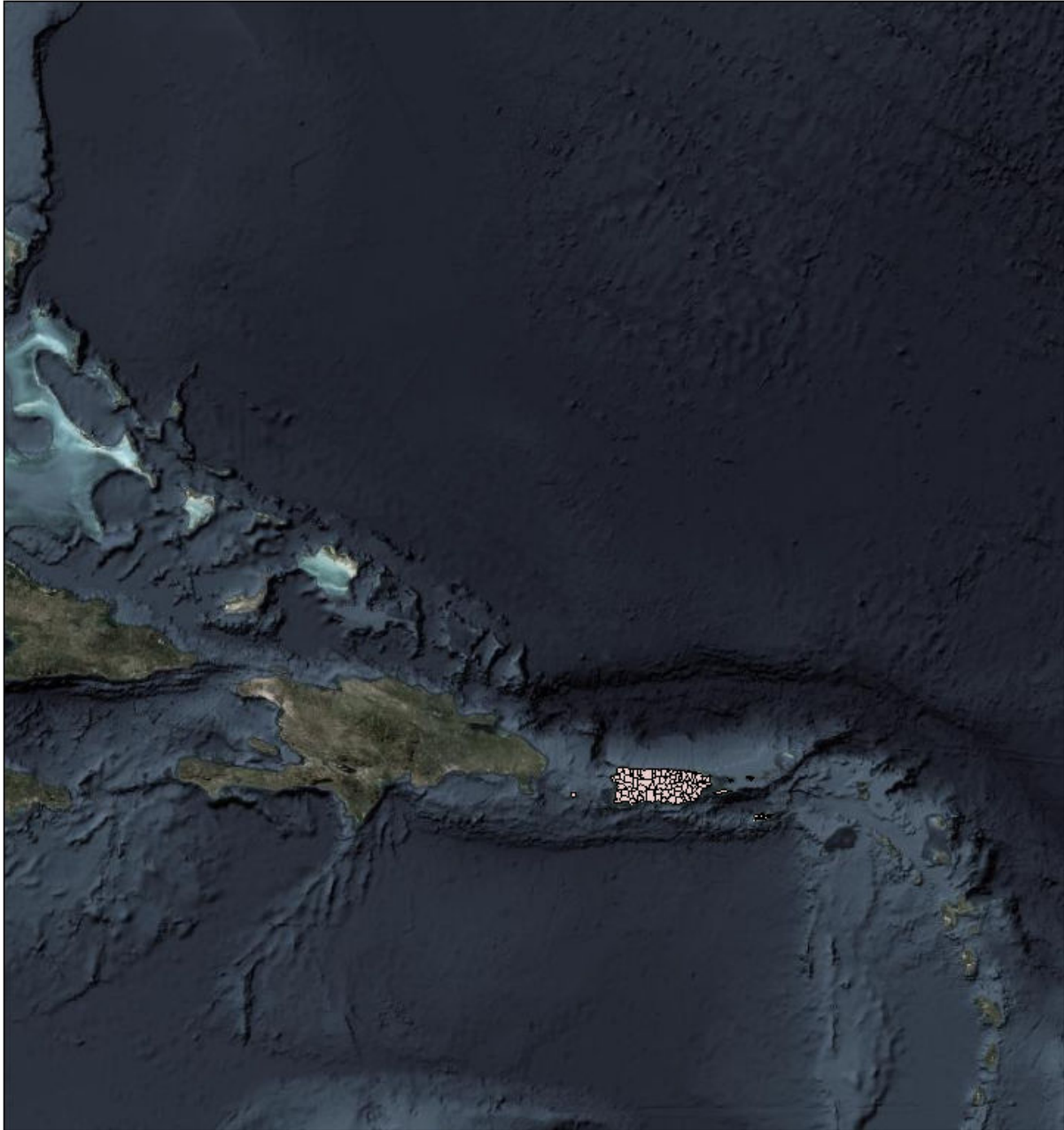
0 80 160 320 mi
0 125 250 500 km

- Counties
- Mission Model Swaths
 - TS
 - Cat 1
- Tropical Cyclone Observed Surface Wind Swath
 - Observed (Best Track) Winds \geq 34 knots (39 mph)
 - Observed (Best Track) Winds \geq 50 knots (58 mph)

Source: NOAA, Esri, NOAA/NOS/OCS nowCOAST, NOAA/NWS/NHC, NOAA/NWS/CPHC, Esri, HERE, Garmin, FAO, NOAA, USGS, EPA, Source: Esri, DigitalGlobe, GeoEye, Earthstar Geographics, CNES/Airbus DS, USDA, USGS, AeroGRID, IGN, and the GIS User Community

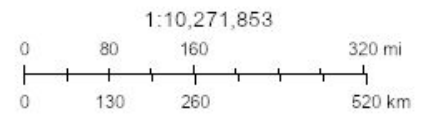
Created by SimSuite

Debris



Debris

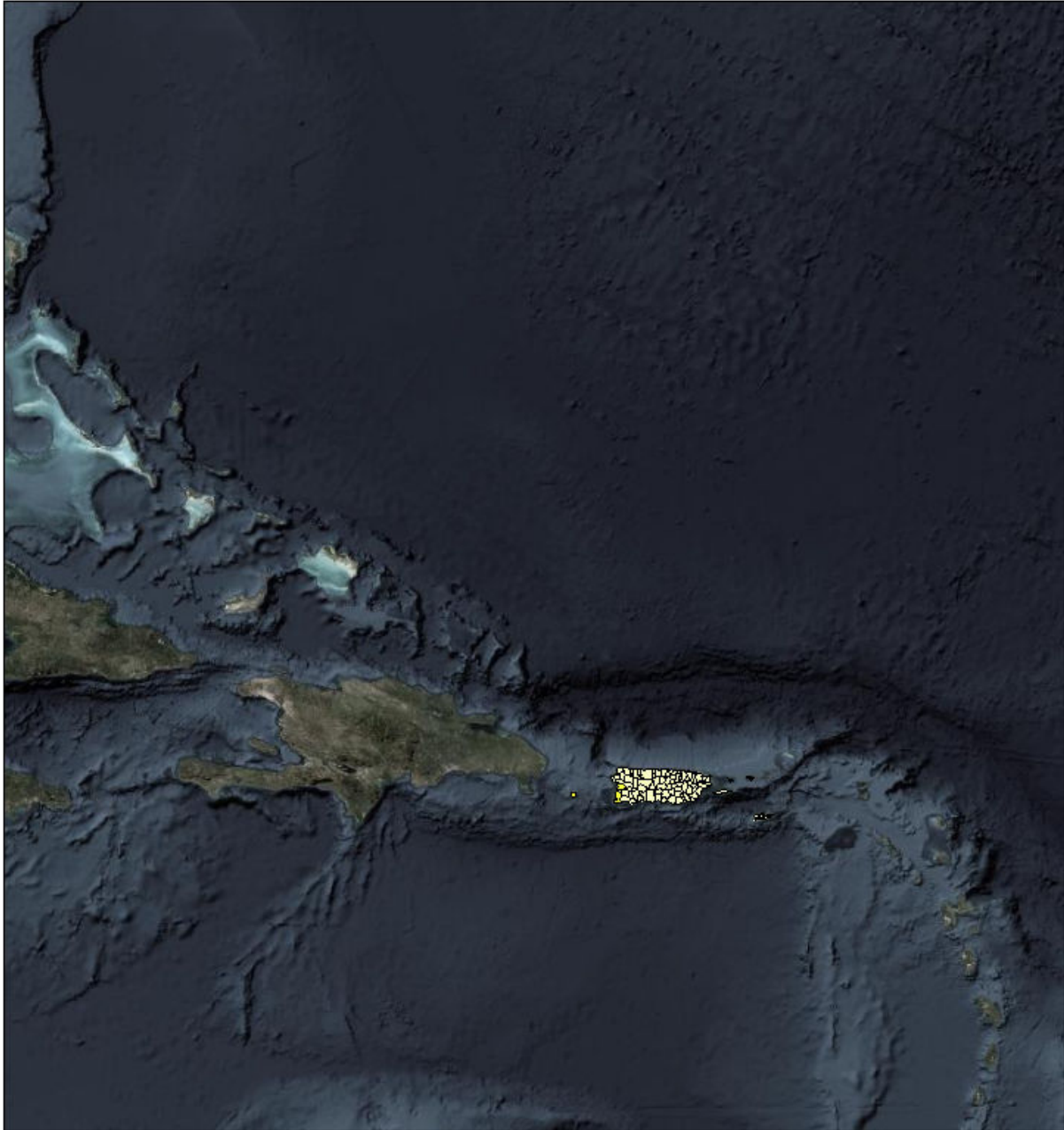
 < 100,000 cubic yards



Source: Esri, DigitalGlobe, GeoEye, Earthstar Geographics, CNES/Airbus DS, USDA, USGS, AeroGRID, IGN, and the GIS User Community


Created by SimSuite

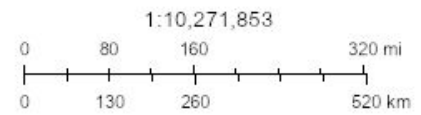
Est. Temp. Roofing



Est. Temp. Roofing

 < 1000 units

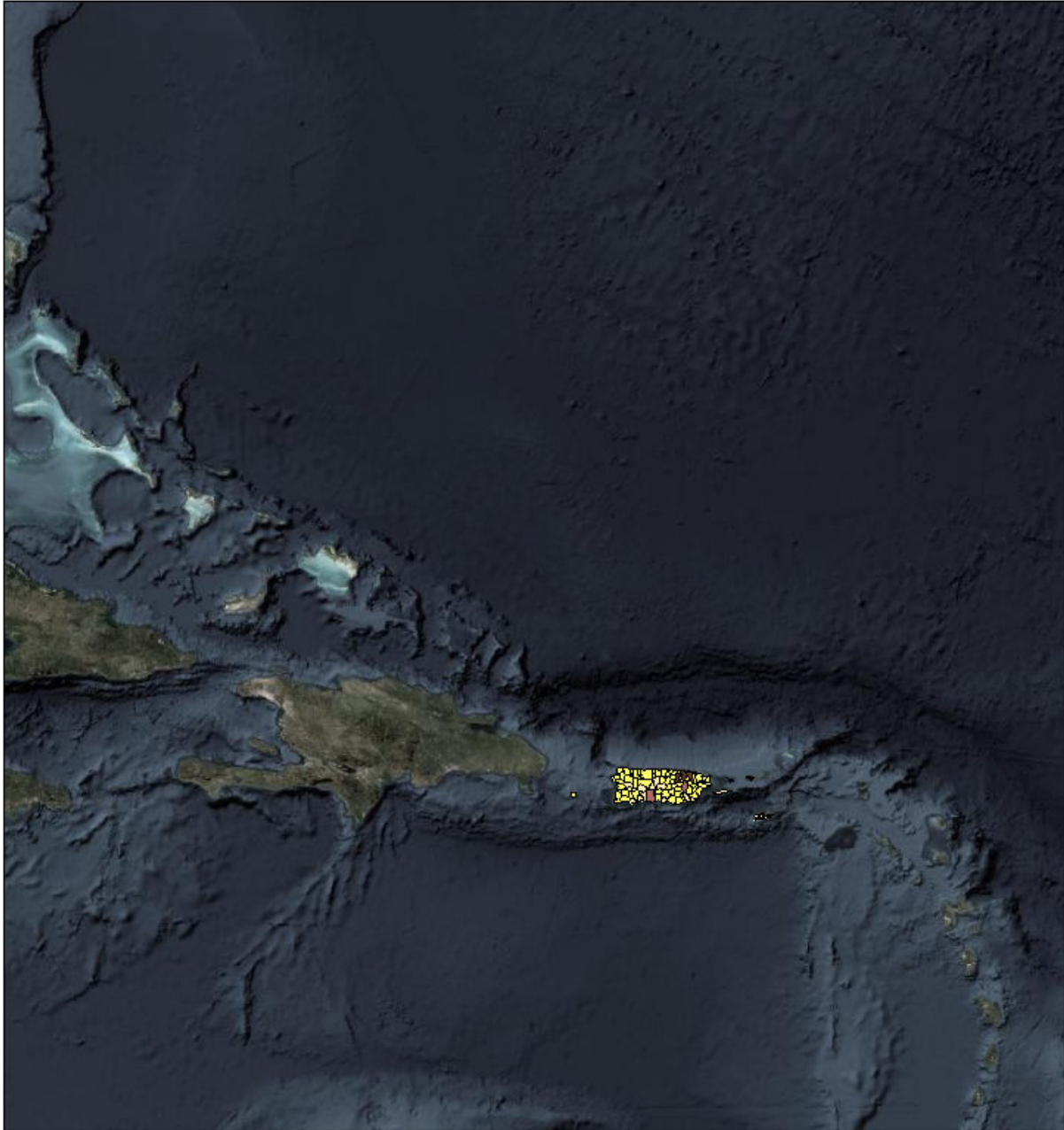
 1000 - 4999 units



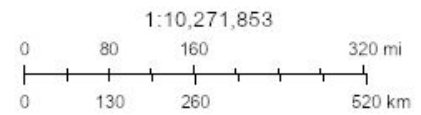
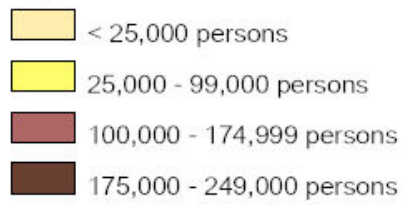
Source: Esri, DigitalGlobe, GeoEye, Earthstar Geographics, CNES/Airbus DS, USDA, USGS, AeroGRID, IGN, and the GIS User Community

Created by SimSuite

Population



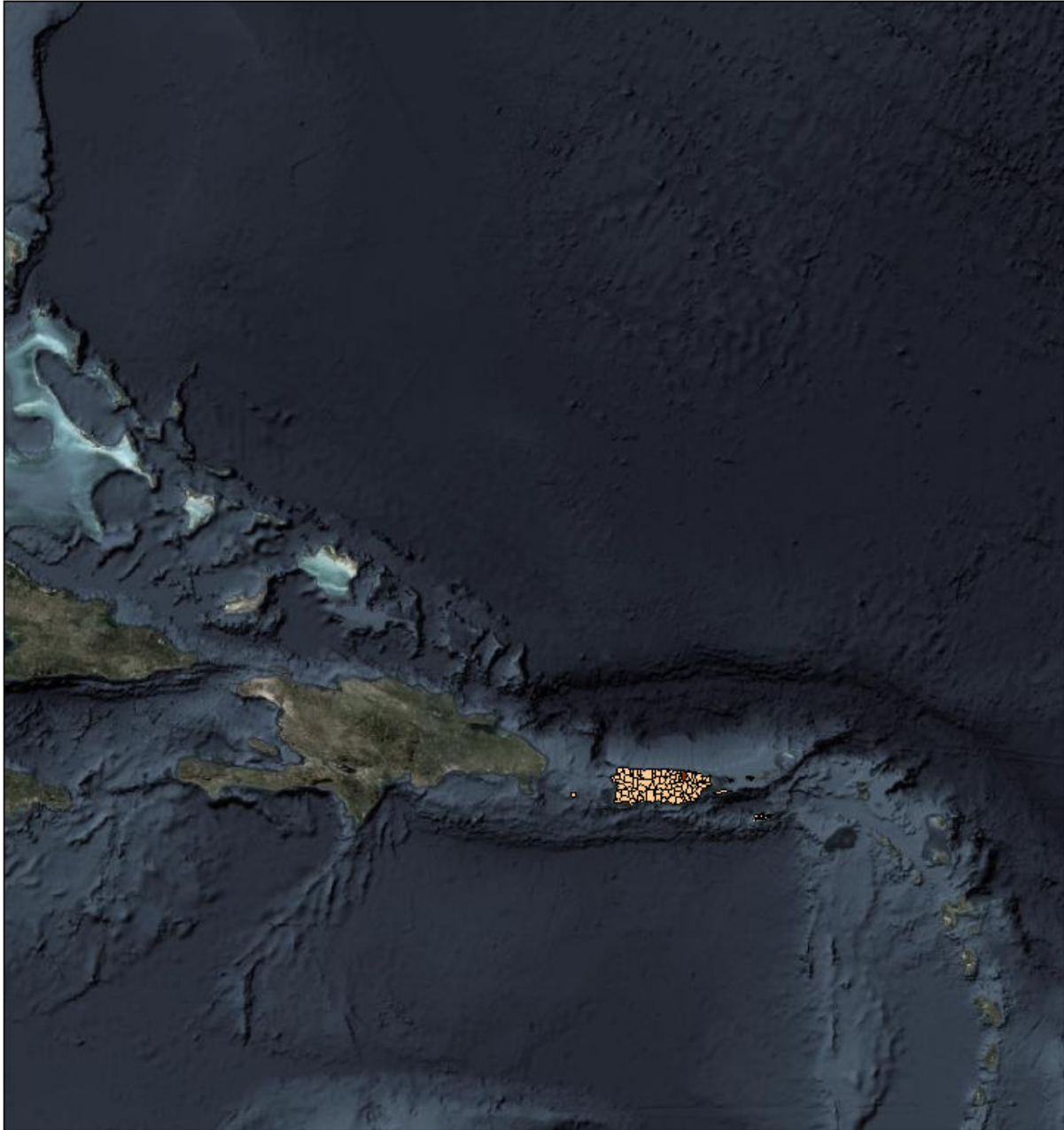
Population



Source: Esri, DigitalGlobe, GeoEye, Earthstar Geographics, CNES/Airbus DS, USDA, USGS, AeroGRID, IGN, and the GIS User Community

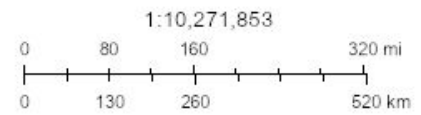
Created by SimSuite

Households



Households

- < 7,500 Households
- 15,000 - 24,999 Households
- 25,000 - 49,999 Households



Source: Esri, DigitalGlobe, GeoEye, Earthstar Geographics, CNES/Airbus DS, USDA, USGS, AeroGRID, IGN, and the GIS User Community

Created by SimSuite

Mission Summary



The mission models account for storm surge and wind damage only, but do not account for other related storm hazards that may affect the mission estimates.

Mission Summary	
Total Counties	13
Debris (cu. yd.)	204,802
Est. Temp. Roofing (units)	5,908
Act. Temp. Roofing (units)	1,950
Population	3,793,120
Households	1,255,040

Population Distribution	
Tropical Storm	3,560,352
Category 1	226,644

PUERTO RICO	Yds of Debris (204,802)	Est. Roof Units (5,908)	Act. Roof Units (1,950)	Population (3,706,691)	Households (1,225,235)
Adjuntas Municipio	0	0	0	19,460	5,992
Aguada Municipio	0	0	0	41,813	13,445
Aguadilla Municipio	0	0	0	60,315	20,594
Aguas Buenas Municipio	0	0	0	28,599	9,103
Aibonito Municipio	0	0	0	25,724	8,163
Arecibo Municipio	0	0	0	95,815	32,769
Arroyo Municipio	0	0	0	19,594	6,318
Añasco Municipio	181	5	2	29,280	9,709
Barceloneta Municipio	0	0	0	25,013	8,414
Barranquitas Municipio	0	0	0	30,402	9,111
Bayamón Municipio	0	0	0	205,692	67,660
Cabo Rojo Municipio	48,615	1,402	463	51,245	18,698
Caguas Municipio	0	0	0	142,677	47,669
Camuy Municipio	0	0	0	35,034	11,387
Canóvanas Municipio	0	0	0	48,068	14,916
Carolina Municipio	0	0	0	175,130	59,813
Cataño Municipio	0	0	0	27,820	8,915
Cayey Municipio	0	0	0	48,065	15,863
Ceiba Municipio	0	0	0	13,440	4,293
Ciales Municipio	0	0	0	18,625	5,685
Cidra Municipio	0	0	0	43,523	13,442
Coamo Municipio	0	0	0	40,846	12,763

Comerio municipio	0	0	0	20,779	6,555
Corozal Municipio	0	0	0	37,109	11,341
Culebra Municipio	0	0	0	1,809	678
Dorado Municipio	0	0	0	38,524	12,331
Fajardo Municipio	0	0	0	36,499	12,709
Florida Municipio	0	0	0	12,678	4,062
Guayama Municipio	0	0	0	45,347	14,560
Guayanilla Municipio	4,826	139	46	21,368	6,677
Guaynabo Municipio	0	0	0	97,281	33,126
Gurabo Municipio	0	0	0	46,407	14,829
Guánica Municipio	16,554	478	158	19,114	6,367
Hatillo Municipio	0	0	0	42,245	13,766
Hormigueros Municipio	15,748	454	150	17,295	6,057
Humacao Municipio	0	0	0	58,190	19,016
Isabela Municipio	0	0	0	45,670	15,384
Jayuya Municipio	0	0	0	16,524	4,849
Juana Díaz Municipio	0	0	0	50,675	14,996
Juncos Municipio	0	0	0	40,609	13,293
Lajas Municipio	22,805	658	217	25,571	8,771
Lares Municipio	0	0	0	30,220	9,635
Las Marías Municipio	0	0	0	9,758	3,143
Las Piedras Municipio	0	0	0	39,088	12,633
Loíza Municipio	0	0	0	29,737	8,770
Luquillo Municipio	0	0	0	20,061	6,654
Manatí Municipio	0	0	0	43,773	14,718
Maricao Municipio	82	2	1	6,227	1,945
Maunabo Municipio	0	0	0	12,143	3,806
Mayagüez Municipio	35,542	1,025	338	87,713	30,953
Moca Municipio	0	0	0	40,052	12,826
Morovis Municipio	0	0	0	32,824	9,640
Naguabo Municipio	0	0	0	27,051	8,966
Naranjito Municipio	0	0	0	30,422	9,145
Orocovis Municipio	0	0	0	23,360	6,940
Patillas Municipio	0	0	0	19,105	6,235
Peñuelas Municipio	97	3	1	23,947	6,899
Ponce Municipio	0	0	0	163,727	52,335
Quebradillas Municipio	0	0	0	25,890	8,423
Rincón Municipio	347	10	3	15,193	5,295
Río Grande Municipio	0	0	0	54,311	17,043
Sabana Grande Municipio	17,475	504	166	25,133	8,592
Salinas Municipio	0	0	0	30,081	10,130

Municipio	0	0	0	30,501	10,109
San Germán Municipio	30,793	888	293	35,254	12,171
San Juan Municipio	0	0	0	389,714	146,656
San Lorenzo Municipio	0	0	0	40,946	13,120
San Sebastián Municipio	0	0	0	42,092	14,255
Santa Isabel Municipio	0	0	0	23,389	7,320
Toa Alta Municipio	0	0	0	75,105	22,815
Toa Baja Municipio	0	0	0	88,798	28,745
Trujillo Alto Municipio	0	0	0	74,490	23,764
Utuado Municipio	0	0	0	32,776	10,394
Vega Alta Municipio	0	0	0	40,100	12,580
Vega Baja Municipio	0	0	0	59,171	18,879
Vieques Municipio	0	0	0	9,349	3,407
Villalba Municipio	0	0	0	25,766	7,130
Yabucoa Municipio	0	0	0	37,665	11,752
Yauco Municipio	11,738	339	112	41,486	13,423

US VIRGIN ISLANDS	Yds of Debris (0)	Est. Roof Units (0)	Act. Roof Units (0)	Population (86,429)	Households (29,805)
ANNA'S HOPE VILLAGE	0	0	0	3,420	1,179
CENTRAL	0	0	0	5,700	1,966
CHARLOTTE AMALIE	0	0	0	17,913	6,177
CHRISTIANSTED	0	0	0	11,970	4,128
EAST END - NORTH	0	0	0	2,850	983
EAST END - SOUTH	0	0	0	1,140	393
NORTHCENTRAL	0	0	0	2,280	786
NORTHSIDE - EAST	0	0	0	4,606	1,588
NORTHSIDE - WEST	0	0	0	3,583	1,236
NORTHSIDE - WEST ISLAND 2	0	0	0	0	0
NORTHWEST	0	0	0	3,990	1,376
SION FARM	0	0	0	9,120	3,145
SOUTHCENTRAL	0	0	0	6,270	2,162
SOUTHWEST	0	0	0	10,260	3,538
ST THOMAS	0	0	0	0	0
WATER ISLAND - 1	0	0	0	512	177
WATER ISLAND - 2	0	0	0	256	88
WEST END - EAST	0	0	0	2,047	706
WEST END - WEST	0	0	0	512	177
WEST END - WEST ISLAND 1	0	0	0	0	0
WEST END - WEST ISLAND 2	0	0	0	0	0
WEST END - WEST ISLAND 3	0	0	0	0	0

COVID-19

#	County	Cases
1	San Juan	88,721
2	Bayamon	57,765
3	Carolina	45,152
4	Caguas	38,667
5	Ponce	34,560
6	Unassigned	31,665
7	Guaynabo	26,660
8	Arecibo	23,181
9	Toa Baja	21,080
10	Toa Alta	19,319
11	Mayaguez	18,982
12	Vega Baja	17,606
13	Trujillo Alto	16,813
14	Humacao	14,467
15	Aguadilla	13,447
16	Gurabo	12,932
17	Rio Grande	12,528
18	Juana Diaz	12,408
19	Cayey	12,376
20	Cidra	12,262
21	Isabela	12,214
22	San Sebastian	11,427
23	Cabo Rojo	11,331
24	Canovanas	11,319
25	Moca	11,255
26	Juncos	11,205
27	Aguada	11,150
28	Dorado	10,877
29	Manati	10,808
30	Corozal	10,741
31	Vega Alta	10,468
32	Las Piedras	10,287
33	Guayama	10,224
34	San Lorenzo	10,216
35	Hatillo	10,023
36	Coamo	9,788
37	Camuy	9,481
38	Yauco	9,409
39	Yabucoa	8,783

40	Lares	8,774
41	Fajardo	8,393
42	Naranjito	8,392
43	Barranquitas	8,173
44	Morovis	8,099
45	San German	8,012
46	Quebradillas	7,532
47	Aguas Buenas	7,155
48	Aibonito	7,130
49	Anasco	6,994
50	Utua	6,792
51	Salinas	6,610
52	Villalba	6,559
53	Barceloneta	6,558
54	Catano	6,423
55	Naguabo	6,239
56	Lajas	5,884
57	Orocovis	5,663
58	Santa Isabel	5,569
59	Sabana Grande	5,463
60	Adjuntas	5,446
61	Comerio	5,222
62	Loiza	5,179
63	Penuelas	4,960
64	Guayanilla	4,884
65	Arroyo	4,784
66	Patillas	4,681
67	Jayuya	4,583
68	Luquillo	4,556
69	Ciales	4,544
70	Hormigueros	4,260
71	Florida	4,050
72	Rincon	3,742
73	Guanica	3,037
74	Ceiba	2,808
75	Maunabo	2,804
76	Las Marias	2,462
77	Vieques	1,604
78	Maricao	1,298
79	Culebra	445

Report Generated by SimSuite

<https://simsuite.usace.army.mil/wab/v2.15/MissionModels/index.html#advid=257&oid=82&name=Hurricane%20Fiona&advisory=Adv.%2017&advlf=G>